

# Portrait of a Consultant



Jacksonville, Florida

January 24, 2013

ARCHER



608-836-5503 • 217-825-9317  
www.soilright.com



608-836-5503 • 217-825-9317  
www.soilright.com



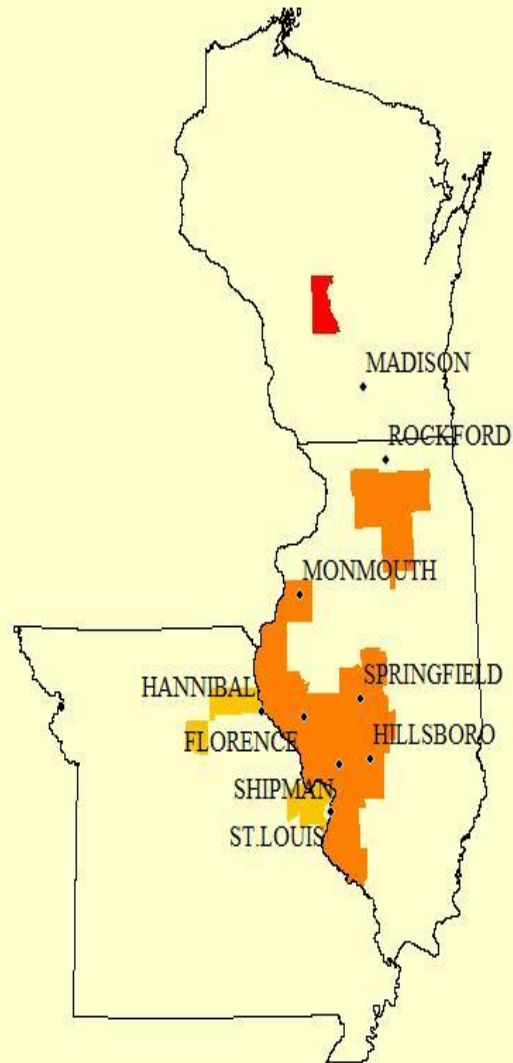






# History of SRCS

- Began in October of 1986
- Currently servicing over 72,000 acres
- Covering some 30 counties throughout Illinois, Missouri and Wisconsin
- Working with virtually all crops from corn, soybeans and wheat, to vegetables, fruits, horse radish, wine grapes.
- If it's grown in Illinois we probably work on it.



# Mission & Vision Statement

- We provide economically wise environmentally sound information, through science and technology, to help our clients manage their resources and produce profit.
- To be the most reliable, correct, and fastest information source that our clients can find.



# What Does SRCS Do?

- First cog in a growers management strategy
- Specializing in soil and plant health
- Collect data, analyze data and develop a system to enhance the growers success
- Make a plan, monitor the plan, and adjust the plan
- Controlling expenses while enhancing soil and plant health



# How is this Accomplished?

- Soil mapping and sampling
- Soil analyzed for over 20 different criteria
- Recommendations are made for soil health, economics, tillage, technology and any other client concerns
- Available to answer questions throughout
- Data collection completed annually

PRACTICE  
YOUR LIFE  
DEPENDS ON IT

Mt

Of



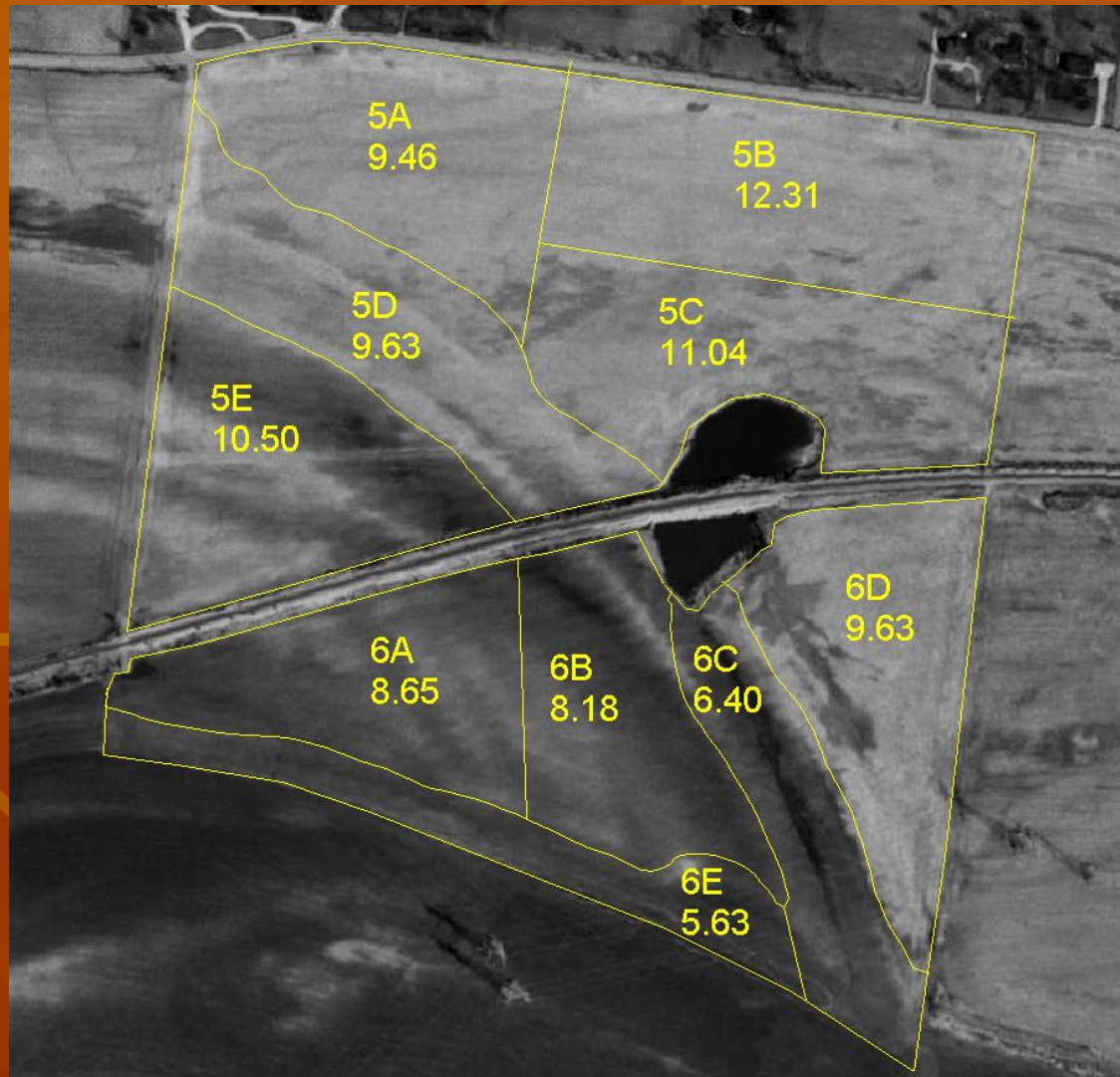




PRACTICE  
~~YOUR~~  
~~LIFE~~  
YOUR LIFE  
DEPENDS ON IT

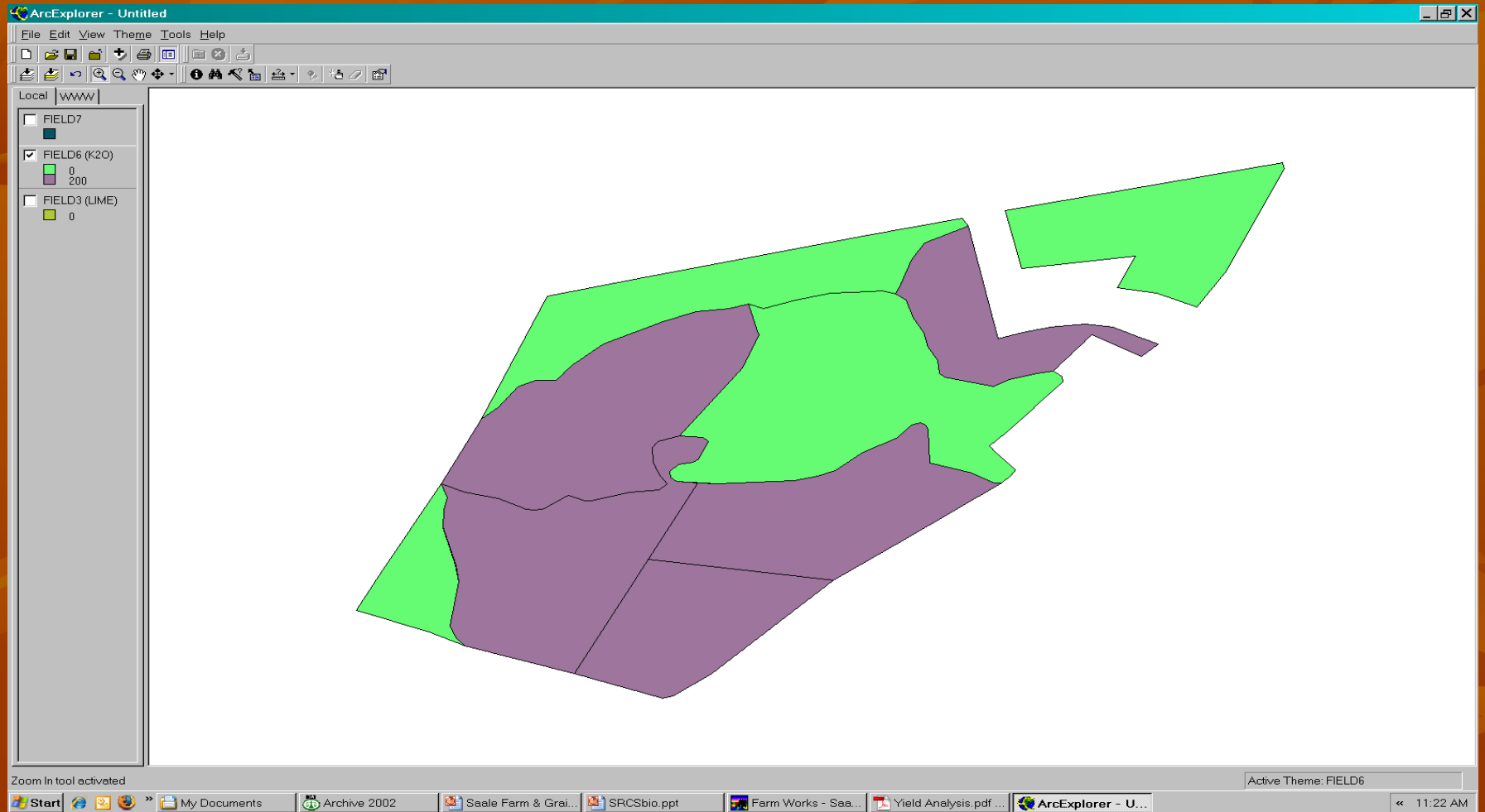


# Mapping in Zones

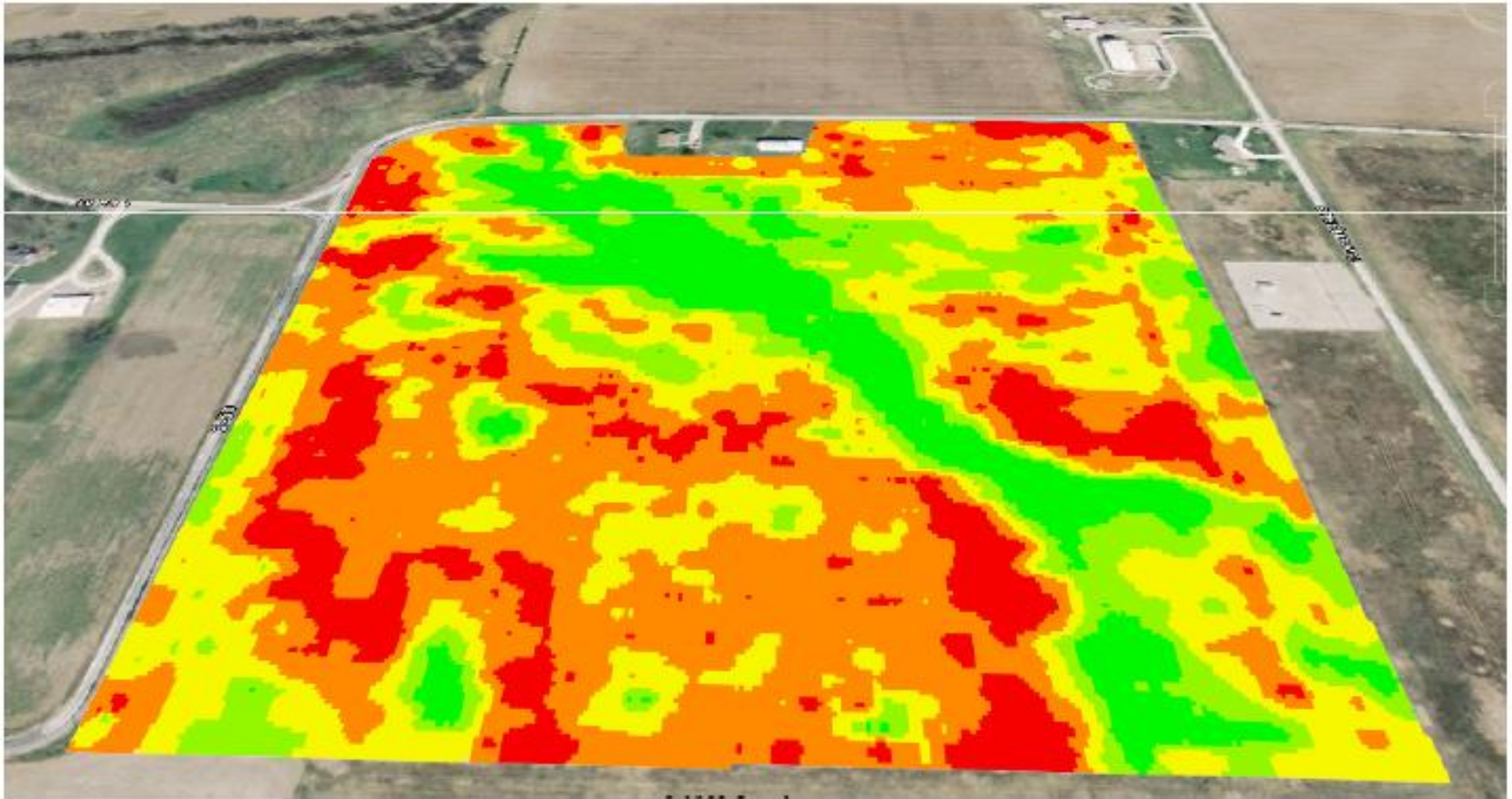




# VRT Recommendations



# Data Analysis





# Other Services

- Nitrogen Management Program
- CNMP and EQIP plans
- Pasture Management
- Septic Evaluations
- Soil mapping for Coal Mine Industry
- Wildlife plot installation and management

# New Services

- Family Business Planning
- Managerial Accounting Services
- Looking to add a technology services department



# Newest Projects

- Working with University of Illinois-Chicago with infrared satellite imagery to give corn users information on crop health and potential yield.
- SRCs has developed the ground truth mechanism of the project to combine with aerial imagery.



## LandViewer

- We look at crop health and continued healthful
- We consider soil strength and yield potential. In 3
  - Slightly cooler
  - Water holding
  - Generally better
    - Soils in north
    - Southern are
- Over 100 days grow.
- We calculate population at various locations of
  - Strategically ch





**Soil-Right Consulting Services, Inc.** - We specialize in soil & plant health.

[Why Choose Soil-Right?](#) | [Services](#) | [Turf & Landscape](#) | [GIS Services](#) | [Contact](#) | [Home](#)



**Economically Wise  
Environmentally Sound** Soil-Right,

"Our goal is not to sell you a product line. Through our independence, we are free to recommend only what is required for outstanding crops."

-- Randy Darr, President

Randy Darr  
101 1st Street  
Shipman, IL. 62685  
(618)836-5503  
e-mail: [gooddirt@soilright.com](mailto:gooddirt@soilright.com)

Dave Rahe  
828 S. Oak St.  
Hillsboro, IL 62049  
(618)836-5503 / (217)494-7451  
e-mail: [dave@soilright.com](mailto:dave@soilright.com)

### Our services are economically wise.....

Remember, an ounce of prevention is worth a pound of cure. We help you prevent problems so you don't have to start all over, spending dollars you may not have in your budget.

Soil sampling, soil testing, soil analysis, and precision farming are just the beginning of the services we offer. We are really talking about healthy soil for healthy crops. Contact us to take the guess work out of your soil management decisions.

### Our services are environmentally sound.....

Through proper analysis, and catching problems in the early stages, we can prevent excessive applications of fertilizer and over-use of chemicals.



### Our mission statement.....

We provide economically wise environmentally sound information, through science and technology, to help our clients manage their resources and produce profit.



